

## **Jackal Wireless Subscriber Unit**

V 15.01.08

SU#:

### **\*WARNING\***

**Never ever ever plug your computer in to the port labelled "radio" on the power injector.  
Electricity is supplied on this port and may damage anything you plug in to it.**

### **\*WARNING\***

### **Setup:**

- To aid in troubleshooting and theft recovery, write down the SU#, MAC and S/N from your unit. The SU# is written on tape on the back of the unit, the MAC and S/N can both be found on the bottom of the unit after removing the cap. If your unit is stolen, report it to us and the MP's. At the very least we can ensure it won't ever work for the thieves and if they do try to use it we can track them down.

- The power supply is dual voltage and may be used with 110v or 220v electricity.

- Don't ever press the "reset" button on the bottom of the SU. This will erase the configuration and prevent the SU from working at all.

- The radio is weatherized, but it's not a submarine. Properly installed it will survive any weather we have here. If you install it poorly and it blows over in to a puddle or you leave it laying out in the open, we will not refund/repair/replace it. You bought it so take care of it.

- Please look at the included photo of components. You should have one of everything in the picture, except the gorilla box.

- Subscriber Unit (SU)
- Pole Mount
- Wall Mount Adapter
- 40ft Radio Cable
- Power Injector
- Power Supply
- 15ft Network Cable

- The network cable from the power injector to your computer is a crossover cable. If you want to plug the connection in to a switch instead of your computer, you will need a straight thru cable or a switch that is auto adapting.

Start by removing the clip on boot from the bottom of the SU, and taking out the foam insert. Run one end of the radio cable through the hole in the bottom of the boot and plug it in to the SU. Wrap the foam insert around the radio cable and slide it down until it is firm against the SU. Finally, slide the boot down over the foam insert and clip it back in place.

The subscriber unit is installed outside. It may be installed on a pole, the side of a wall, a broomstick, whatever. "The end that says Trango Broadband" is the bottom front of the SU. You can

use the included zip ties to mount to a pole or use the wall mount adapter and some screws to mount to a wall. However it is mounted, it **must be at least slightly above roof/wall level**.

The SU is installed so that it is approximately facing the TMC (med clinic) if you are in Dodge North & South, the Stables if you are in Freedom Village, or the intersection of Heidelberg & Arizona if you are in Audi Murphy or Omaha Beach and level to the ground (not tilted up or down). There must be a clear line of site in the direction that the SU is facing. It **will not work** if there is a trailer or wall in the way.

Once the SU is mounted, run the radio cable through a window or hole and in to your trailer. One end of this cable should already be plugged in to the SU. Be careful not to damage the cable when cutting the zip ties holding it together. Use a zip tie to secure the cable to something near the SU so if the cable is pulled it won't damage the SU.

Slide the cover off the power supply and attach the plug module. Plug the power supply in to electricity and then in to the power injector. The green light labeled "power" on the power injector should come on. The power injector and power supply must be indoors. Only the SU and it's cable are weatherized for outdoors use.

Plug the end of the radio cable in to the port on the power injector labeled "radio". Make sure you have a "drip loop" where the power injector is higher than the lowest point in the cable so water hitting the cable outside will not run along it and in to the injector. Wait one minute, the green light labeled "radio" on the power injector should come on. If the light does not come on, there is a problem with the cable connecting the power injector to the SU.

**Wait for a minute after the green "radio" light has come on.**

Set your computer's ethernet interface to DHCP.

On Windows XP computers this can be done by going to the "Start Menu" then selecting "Control Panel" or "Settings -> Control Panel". From the control panel select "Network Connections". Right click on the item labeled "Local Area Connection" and select "properties". Under "This connection uses the following items:", select "Internet Protocol (TCP/IP) and then click the properties button. Make sure that both "Obtain an IP address automatically" and "Obtain DNS server adress automatically" are selected. Click "OK" to close the TCP/IP window and then "OK" again to close the Local Area Connection window.

Disable your wireless connection so the computer won't be confused by two connections to Jackal. Open "Network Connections" from the control panel as in the previous step, right-click on "wireless connection" and select disable.

Plug one end of the network cable in to the port on the power injector labeled network and the other end in to the ethernet port on your laptop.

**Wait about 30 seconds.**

You should be on Jackal, open your web browser and start surfing.

## **Sharing your connection with other people:**

You can share this Jackal connection with many people without affecting your speed or download limits. These are assigned on a per user basis. To share the connection you should connect the network port of the power injector to a switch. **DO NOT plug it in to a router as this will affect your speed and may not work at all.** You can buy a cheap switch for 8+ people at the Liberty Bazaar or online for \$20-40. We don't sell these. After that you just need to make some cables and plug in your friends.

## **Returning the radio:**

This radio may be returned at any point within two weeks of purchase for a full refund as long as it is in **good working condition** and all original parts are included.

### **After two weeks:**

When this radio is returned in **good condition** and by the **original owner** I will refund your \$75 deposit. We will accept units back from second hand owners based on our needs but it is not guaranteed.

Missing items will subtract from the refund as follows:

Subscriber Unit	- \$75
Radio Cable	- \$10
Network Cable	- \$10
Power Injector	- \$10
Power supply	- \$10
Pole mount	- \$10
Pole mount wall adapter	- \$ 5

## SU Troubleshooting

---Never ever ever hit the "reset" button on the bottom of your SU, it erases the configuration---

(1) Problem: The "radio" light on the power injector is not on (but the "DC IN" light is).

Cause: The SU is not plugged in to the radio cable

Cause: The radio cable is damaged

Test: Bring the SU inside and plug it in to the radio port of the power injector with a different cable

Cause: The power injector is damaged

Cause: The SU is kaput

(2) Problem: The "radio" and "dc in" lights on the power injector greatly dim and/or rapidly flash when the SU is plugged in.

Cause: The power supply is bad.

(3) Problem: None of the lights on the power injector turn on.

Cause: The power supply is bad or not properly plugged in.

(4) Problem: Your computer displays a message that says "network cable unplugged".

Cause: The cable between the power injector and your computer is loose or damaged.

Action: Ensure both ends of the cable are fully in their sockets.

Test: Try another cable (must be cross-over)

Cause: The SU is not turned on or still booting.

(5) Problem: Your computer displays a message that says "limited or no connectivity".

Cause: The SU is still booting

Action: The SU can take two minutes to boot.

Don't plug in your computer until it is done.

Cause: The SU is not connected to the access point.

Action: Ensure the SU is still properly mounted and pointed at the access point (Med Clinic or Stables)

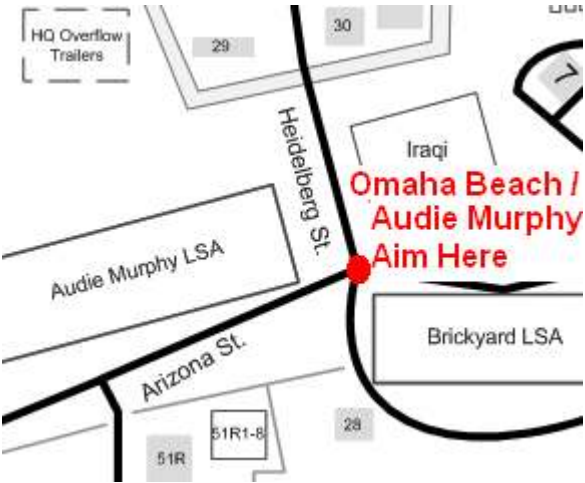
Q: The location of the SU is changing (moving trailers, new owner, etc...), will my SU still work?

A: There are five "zones" that the SU's work in. The five zones are Freedom, Dodge South, Dodge North Top Half, Dodge North Bottom Half, and Audie Murphy/Omaha Beach. If you move the SU between zones some changes are needed in our equipment. For the SU to work at your new location, you need to send me the MAC address (under the bottom cap), SU# (on tape on the back) and where you will be moving to so that I can make changes at the access point for the SU to work in your new location. SU's only work in DS, DN, Freedom Village, Omaha Beach, and Audie Murphy!

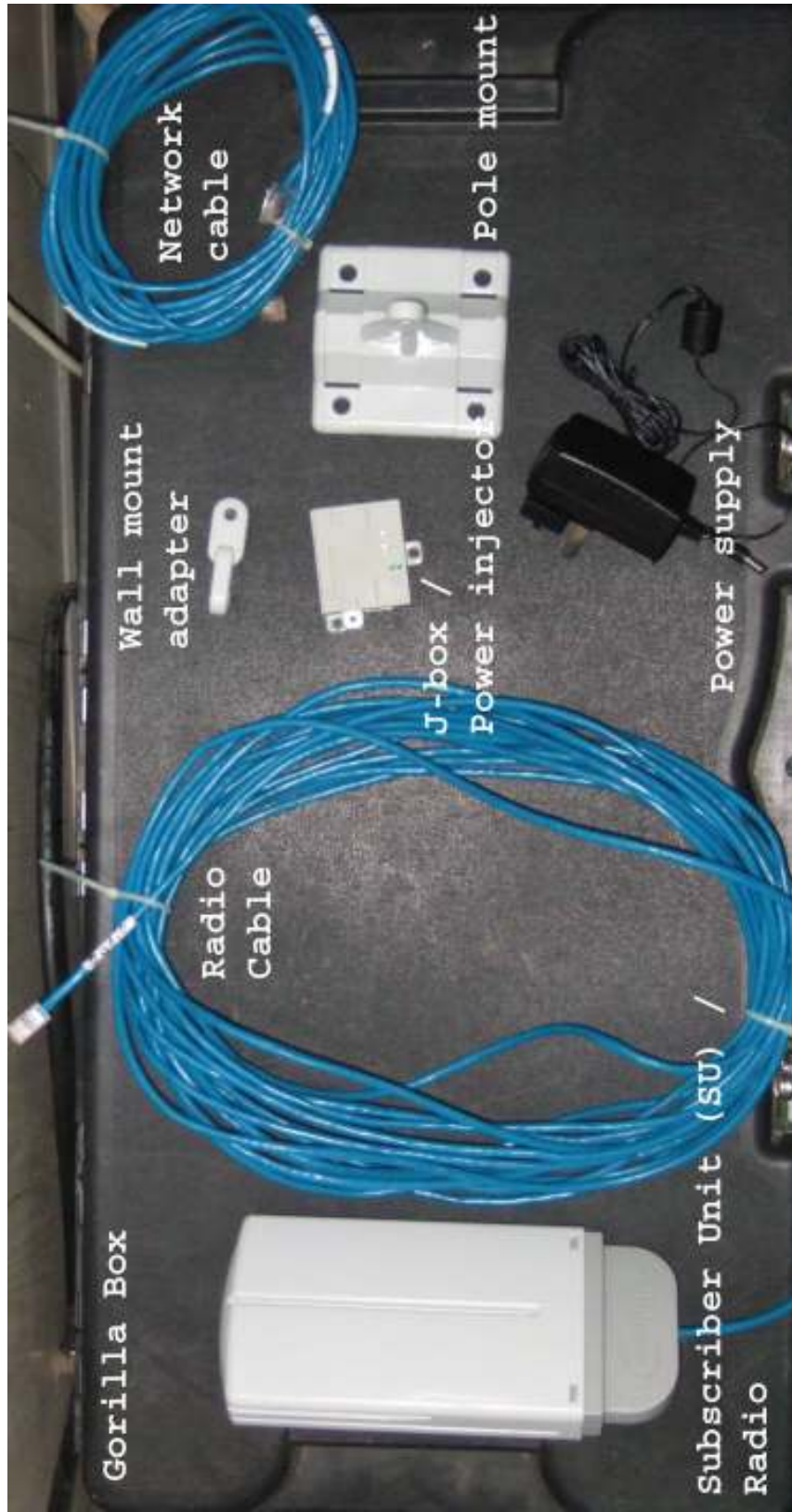
# Finished Installation



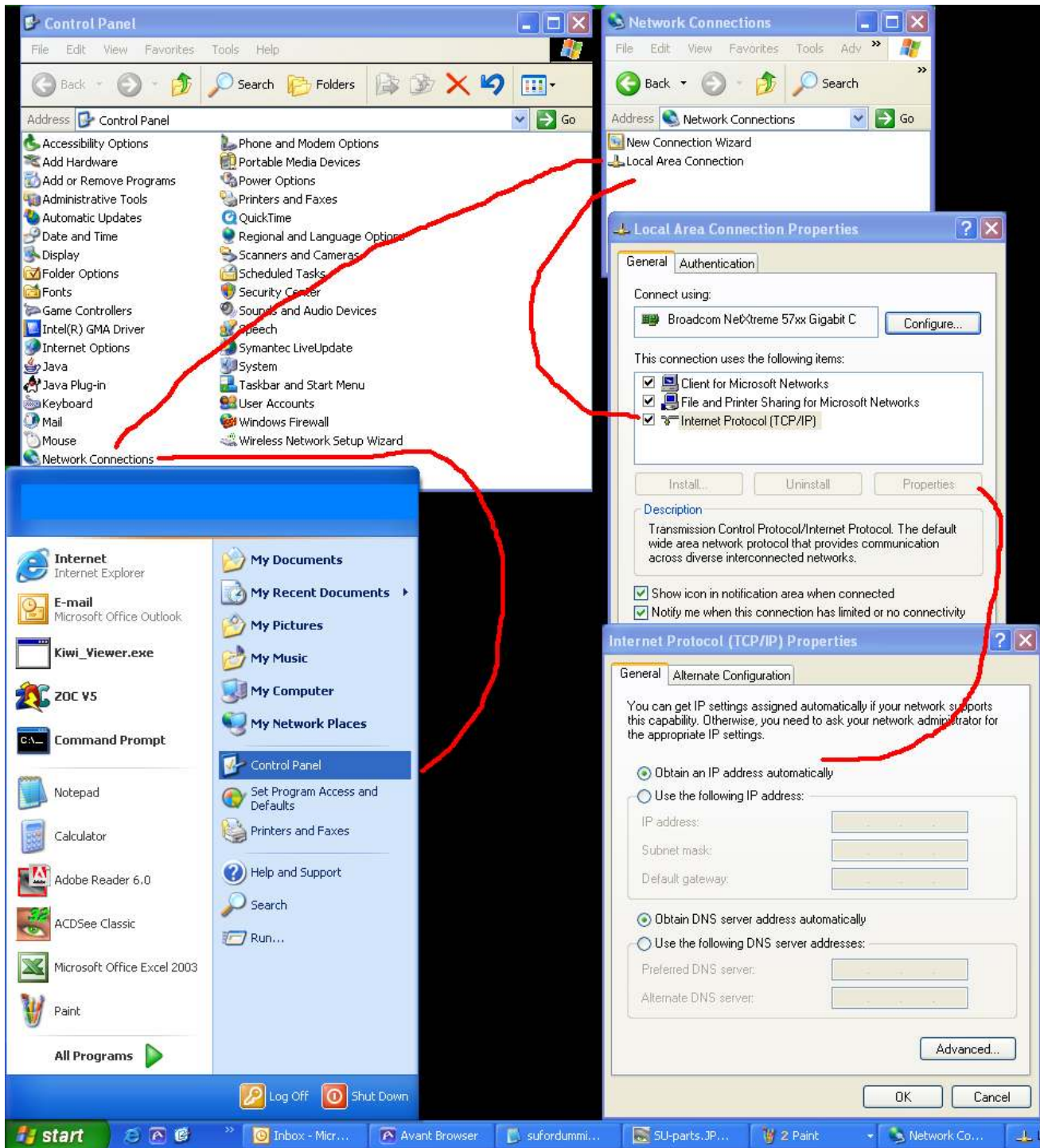
# Where to aim the SU



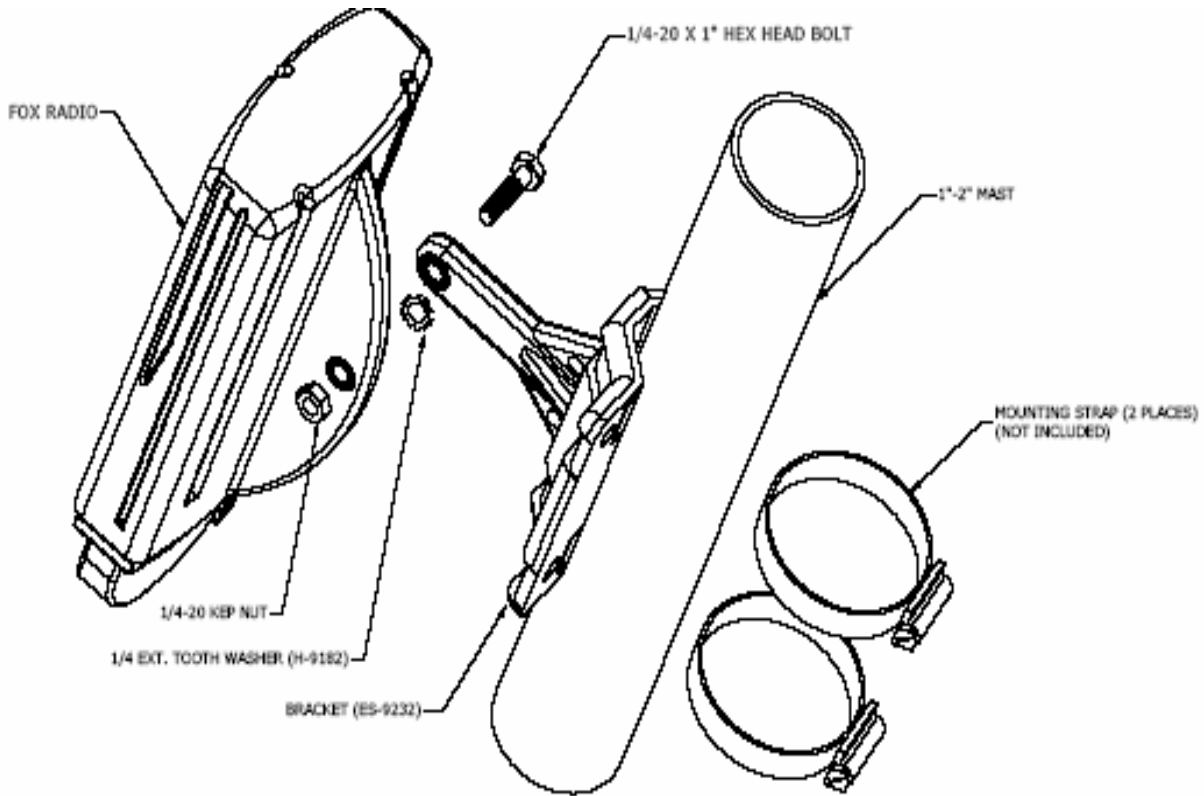
# Kit Components



# Configuring your network interface for DHCP



## Mounting the SU to a pole



## Mounting the SU to a wall

